

2012 APCBEES JEJU ISLAND CONFERENCES SCHEDULE

2012 3rd International Conference on Chemistry and Chemical Engineering (ICCCE 2012)
2012 2nd International Conference on Environmental and Agriculture Engineering (ICEAE 2012)
2012 International Conference on Geological and Environmental Sciences (ICGES 2012)
&
2012 2nd Journal Conference on Bioscience, Biochemistry and Bioinformatics (JCBBB 2012 2nd)

Jeju Island, South Korea

Seogwipo KAL Hotel

June 29-30, 2012

Sponsored and Published by



Engineering & Technology[®]
DIGITAL LIBRARY

www.cbees.org

June 29, 2012 (Friday)**Main Hall of Seogwipo KAL Hotel**

10: 00 – 12: 30	Arrival and Registration
13: 30 - 17: 00	

Note: (1) You can also register at any time during the conference.

(2) Certificate of Participation can be collected at the registration counter.

(3) The organizer doesn't provide accommodation, and we suggest you make an early reservation.

(4) One Excellent Paper will be selected from each oral session. The Certificate for Excellent Papers will be awarded in the Closing Ceremony on June 30, 2012.

Morning, June 30, 2012 (Saturday)

Venue: Sapphire Room

8:30-8:40	Opening Remarks Saji Baby Environmental Manager (Research and Consultation) & Principal Scientist GEO Environmental Consultation
8:40-9:20	Keynote Speaker I Prof. Park Chan Jin University of Incheon “The Utilization of Greenhouse Gas in the Landfill Facilities in Korea”
9:20-10:00	Keynote Speaker II Saji Baby Environmental Manager (Research and Consultation) & Principal Scientist GEO Environmental Consultation “Techniques of Studying the Impact of Anthropogenic Activities on Coastal Geo-morphological Landscape Alteration in Kuwait”

10:00 – 10:20	Taking Photo and Coffee Break
----------------------	--------------------------------------

Morning, June 30, 2012 (Saturday)

SESSION – 1 (JCBBB&ICEAE)

Venue: Sapphire Room

Session Chair:

Time: 10:20 – 12:30

CB204	Knockdown of Adenosine Deaminase 1 Acting on dsRNA Inhibits Expression of Proopiomelanocortin in aCaT Cells Te-Sheng Chang, Yen-Hsing Lu, and Hsiou-Yu Ding
-------	--

2012 APCBEES JEJU ISLAND CONFERENCES

CB206	Effects of Methyl Jasmonate and Salicylic Acid on Alkaloid Production from <i>in vitro</i> Culture of <i>Stemona</i> sp. Natthiya Chaichana and Srisulak Dheeranupattana
CB208	<i>In vitro</i> Effects of Polysaccharide Gel Extracted from Durian Rinds (<i>Durio zibethinus</i> L.) on the Enzymatic Activities of MMP-2, MMP-3 and MMP-9 in Canine Chondrocyte Culture Waranee Pradit, Korakot Nganvongpanit, Puntita Siengdee, Kittisak Buddhachat, Maslin Osathanunkul, and Siriwadee Chomdej
CB209	Dyeing and Spectroscopic Properties of Natural Dyes on Poly(Lactic Acid) and Poly(Ethylene Terephthalate) Fabrics Vorabodee Sriumaoum, Jantip Suesat, and Potjanart Suwanruji
CB210	Relationship of Oxidative Stress with HIV Disease Progression in HIV/HCV Co-infected and HIV Mono-Infected Adults in Miami Dong-Ho Shin, Sabrina S. Martinez, Mary Parsons, Dushyantha T. Jayaweera, Adriana Campa, and Mariana K. Baum
CB212	Dyeing of Cotton, Bombyx Mori and Eri silk fabrics with the Natural Dye Extracted from Tamarind Seed Supaluk Tepparin, Prontip. Sae-be, Jantip Suesat, Sirisin Chumrum, and Wanissara Hongmeng
CB213	Therapeutical Effect of Extracts of <i>Terminalia chebula</i> In Inhibiting Human Pathogens and Free Radicals Dolly Singh, Deepti Singh, SoonMO CHOI, Sun MI ZO, Saet Byul KI, Sung Soo HAN
CB214	An AFM-FET Biosensor for Proteomic Screening Byung I. Kim, Joseph O. Holmes, Moon S. Ryu, and P. Deschateletes
CB215	Potential Application for Micro-particles Manipuation Utilizing Electrokinesis in an Electrodeless Dielectrophoresis Chip Liang-Ju Chien, Chen- Yu Lee, Jia-Cheng Pan, Yao-Lin Gao, Chi-Han Chiou, and Jr-Lung Lin
CB217	Investigation of the Optimum Condition of Pretreatment Processes for the Knitted Fabric Derived from PLA/Cotton Blend Issara Na Phatthalung, Prontip Sae-be, Jantip Suesat, Potjanart Suwanruji and Nantaporn Soonsinpai
A00001	Combining AHP and TOPSIS Approaches to Support Site Selection for a Lead Pollution Study Ali Al Maliki, Gary Owens and David Bruce
A00002	Landfill Leachate Treatment Using PAC Supplemented SBR Technique-Influence of Input Air Shuokr Qarani Aziz, Hamidi Abdul Aziz and Mohd Suffian Yusoff
A00006	Future PM10 Concentration Prediction Using Quantile Regression Models Ahmad Zia Ul-Saufie, Ahmad Shukri Yahaya, Nor Azam Ramli and Hazrul Abdul Hamid
A00012	Characterization of Natural Organic Matter in the Yeongsan River by Fluorescence Spectroscopy, XAD and FT-IR Dongjin Lee, Byungjin Lim
A00016	Quantitative Analysis of Chromium and Cadmium Content of Ten Selected Herbal Supplements from Malate, Manila, Philippines Judilyn Solidum, Gabrielle Gabriel, Justine Rubilette Mariano, Niña Isabelle Tolentino,

	Cristine Utulo
A00017	Essential Chemicals in Selected Fruit Peels from Manila, Philippines Judilynn N. Solidum

Morning, June 30, 2012 (Saturday)

SESSION – 2 (ICEAE)

Venue: Camellia Room

Session Chair:

Time: 10:20 – 12:30

A00018	Assessment and Identification of Heavy Metals in Different Types of Cooked Rice Available in the Philippine Market Judilynn Solidum, PhD, Evan Dykimching, Cristan Agaceta, Agnes Cayco
A00019	Purification of Two Regional PAHs Contaminated Soil Using Subcritical Water Young-Tae Jo, Mohammad Nazrul Islam and Jeong-Hun Park
A00020	Determination of Partitioning Coefficient and Desorption Rate for Subcritical Water Extraction of PAHs Mohammad Nazrul Islam, Young-tae Jo, Jeong-Hun Park
A00021	Effect of the applied electric potential on nitrate removal in bipolar electrolysis using ZVI packed bed Hanki Kim
A00024	Qualitative and Quantitative Management of Irrigation Water in Arid Region Ali Shahidi
A00028	Quantitative Determination of Formaldehyde in Air in Selected Laboratories in the University of the Philippines Manila-Philippine General Hospital Jan Kristine Belmonte, Fresan Catugda, April Czareen Cruz, Diana Velle Gulla, Joy Iringan, Phoebe Llamelo, Kim Santos-Quimosing, Khristie Michelle Ventura, Judilynn Solidum, PhD
A10007	Resilience of SBR Activated Sludge System against the Presence of Engineered Iron-Oxide Nanoparticles Sangchul Hwang, Diana Martinez, Priscilla Perez, Carlos Rinaldi
A10019	A Comparison of Conventional and Conservation Tillage Implements Used for Crop Production in Omusati Region of Northern Namibia B Mudamburi, A Ogunmokun, B Kachigunda and J Kaurivi
A10021	Effect of Organic Fertilizer Use in Rice Paddy to Reduce Greenhouse Gases Pantawat Sampanpanish
A10031	On the Improvement of Heat Island Phenomena by Rooftop Planting in Downtown Regions Park Chan Jin
A10040	Components explaining of the drought in the context of Environmentally-Technical Adaptation Shahab Alddin Shokri, S. Mahmoud Hosseini, S. Mehdi Mirdamadi, S. Jamal Faraj-O-Lah Hosseini
A20001	Influence of Seed Conditioning to Improve Genetic Purity in Eggplant S N Vasudevan, Rakesh C Mathad, S B Patil, Lokeshappa B L and Doddagoudar S R
A20012	Estimation of Filtering Potential of Charcoal for Iron and Manganese Removal from Groundwater

	Makoto Nishigaki, M. Shahbaz Akhtar, Claudia Hartwig, M. Ali Tahir, Yoko Oki
A20017	Allelopathic Potential Effect of <i>Pennisetum Purpureum</i> on <i>Cyperus Iria</i> TAN PUI WAN, ISMAIL B. SAHID, CHUAH TSE SENG
A20021	Evaluation of Interaction between Different Levels of Potassium and Water on Sugar Yield of Sugar Beet Ghasem Tohidloo, Mohammad ali Chegin and Saeed Ghalebi
A30011	Optimisation of Biomass Structured by Chopping for Energy Utilisation Istvan Szabó and Peter Szendrő

12:30 – 13:30	Lunch
---------------	-------

Afternoon, June 30, 2012 (Saturday)

SESSION – 3 (ICCCE)

Venue: Sapphire Room

Session Chair:

Time: 13:30 – 15:30

A003	Fabrication and Characterization of LiNO ₃ -Al ₂ O ₃ Composite Solid Electrolytes M. Sulaiman, A. A. Rahman and N. S. Mohamed
A004	Oligoresveratrol Isolated from Stem Bark of <i>Hopea Odorata</i> as Antioxidant and Cytotoxicity against Human Cancer Cell Line Sri Atun, Nurfinaz Aznam and Retno Arianingrum
A006	Computational Studies of Fluidization of Wet Solid Particles Eldin Wee Chuan Lim
A007	Ionic Liquid with β -cyclodextrin Based Aqueous Two Phase Extraction of Parabens in Water Samples Noorashikin M.S, Mohamad S. and Abas M.R.
A008	Intensifying the Recovery of Carboxylic Acids by Reactive Extraction Kailas L. Wasewar and Chang Kyoo Yoo
A010	Isolation, Identification and Antiviral Activity of Bioactive Compounds of <i>Kampheria Rotunda</i> Nurfinaz Aznam, Sri Atun, Retno Arianingrum and Sri Nurestri
A011	The Measurement of Antioxidant Capacity of <i>Melicope glabra</i> by ORAC-FL and DPPH and its Chemical Constituents Nur Kartinee Kassim, Mawardi Rahmani, Amin Ismail, Aminah Abdullah and Khalid Hamid Musa
A013	Synthesis, Characterization and CO-Releasing Properties of Linked Alkyne-Bridging Cobalt Carbonyl Clusters Yiyi Qin, Baohua Zhu, Haiyan Xu, Qi Zhao, Weiqiang Zhang
A015	Potential of a Chalcone Derivate Compound as Cancer Chemoprevention in Breast Cancer Retno Arianingrum, Retno Sunarminingsih, Edy Meiyanto, and Sofia Mubarika
A016	<i>Ab initio</i> Study of RNCN (R =H, F, Cl, Br, CH ₃) Radicals Plus NO Reaction: Kinetics, Mechanism and Product Branching Probabilities Hui-Lung Chen, Hsin-Tsung Chen, Jee-Gong Chang, and Wen-Jay Lee
A018	A Study on the Impact of Non-aqueous Solvent Mixtures on the Crystallinity of

	Polyester/Cotton Composite Fibre S. Laya and B. Muralidharan
A022	The Structure-reactivity Relationship for Metathesis Reaction between Ethylene and 2-butene of WO ₃ /SiO ₂ Catalysts Influenced by Different Calcination Temperature Somboon Chaemchuen, Suphot phatanasri, Francis Verpoort, Nikom Sea-ma and Kongkia Suriye
A024	Study on Inverse CeO ₂ /CuO Catalysts for CO Preferential Oxidation Shanghong Zeng, Yan Wang, Kewei Liu and Haiquan Su

Afternoon, June 30, 2012 (Saturday)

SESSION – 4 (ICCCE)

Venue: Camellia Room

Session Chair:

Time: 13:30 – 15:30

A025	Preparation and Characterization of Polyethylene Terephthalate/Montmorillonite Nanocomposites from Oligomerically Modified Montmorillonite Xiaoling Huang, Haiquan Su, Xiaoli Wang, Laga Tong, Bingbing Zhang
A028	Macroalgae Pyrolysis and Its Devolatilisation Kinetics Somayeh Daneshvar, Feridoun Salak, Koji Otsuka
A032	Extraction of Nanosized α -Fe ₂ O ₃ Particles from Hematite Ore Nagy M. Khalil, Elhadi E. Saad and M. M. S. Wahsh
A036	Co-pyrolysis of Coal and Agricultural Waste Akinwale Aboyade, Adelaja Osibote, Ademola Rabi, Marion Carrier and Johann Görgens
A037	Removal of Nitrate from Water using a Fluidized Bed Ion Exchange Column Ammar Arab Beddai, V.V.Basava Rao and S. Ram Mohan Rao
A038	Equilibrium Studies on Reactive Extraction of Lactic Acid using Tributyl amine in Chloroform Shalini Basetty and Basava Rao V. V
A041	Influence of Temperature on a Spiral Wave in Excitable Chemical Media Chaiya Luengviriyaya, Jiraporn Luengviriyaya, Malee Sutthiopad and Stefan C. Müller
A042	Some Dynamical Features of a Bubble-Free Belousov-Zhabotinsky Reaction Jiraporn Luengviriyaya, Chaiya Luengviriyaya, Malee Sutthiopad, Boosayarat Tomapatnanaget and Stefan C. Müller
A10004	An Investigation on the Transition Metal Doping and Energy Band Structure of NaTaO ₃ Nanoparticles Xiaoqing Liu, Yue Meng and Xiaojing Wang
A10007	Isolation and Characterization of Fatty Acids Ester from the Thai Sea Gorgonian, <i>Junceella</i> sp. Patchara Pedpradab, Wallapa Molex and Khanit Suwanborirux
A10008	Utilization of Chemically Modified Rice Hull for the Treatment of Industrial Wastewater Siew-Teng Ong and Weng-Nam Lee
A10012	Identification of Chitosan-Degrading Microbes for the Production of Chito oligomer Mat B Zakaria, Syaidatul Najiah Zakaria, Muslihah Musa, Hasrani Hamilin and Nurul Asma

	Hasliza Zulkifly
A20001	Kinetic Studies on Acid Hydrolysis of OPEFB in a Batch Reactor Shanti Faridah Salleh, Robiah Yunus, Mohd Farid Atan and Dyg Radiah Awg Biak
A30011	Synthesis of Hierarchical Porous Structures in Zeolites using Rubber Latex as Macromolecular Templates Hsiu-Ling Hsu, Huang Yi Ju, Prajitha Kumari, L. Selva Roselin and Rosilda Selvin

15:30 – 15:50	Coffee Break
---------------	--------------

Afternoon, June 30, 2012 (Sunday)

SESSION – 5 (ICGES)

Venue: Sapphire Room

Session Chair:

Time: 15:50 – 18:00

S007	Determination of Typhoon Intensity by Using Objective Satellite Image Processing Technique Chung-Chih Liu, Liang-De Chen
S008	Establishment and Application of Evaluation Index System (EIS) for Recycling Economy Development of Highway Transport (REDHT) in China Xu Honglei, Zhang Fan, Lan Jun, Wen Zongguo and Huang Liya
S009	The geochemistry of the whole rock and platinum-group elements in pyroxenites of Sorkhband ultramafic complex, Southern Iran Alireza Najafzadeh
S010	The efficacy of Enhancing Horizontal Resolution (EHR) technique in shallow subsurface study using 2D resistivity method at Bukit Bunuh Nordiana Mohd Muztaza, Rosli Saad, Mokhtar Saidin, Mohd Nawawi Mohd Nordin and Nur Azwin Ismail
S014	Status and Achievement of the Green Mine in China Xu Huang, Xin Li, Ke Hu, Yao Liu, Dawei Liu
S015	Application of Fault Sealing Property Analyzing by Tracer in Oilfields Pengfei Shen, Nianqiao Fang, Ling Li, Juan Jin and Feng Wang
S019	Integration of electrical imaging methods in detecting engineering problems Teh Saufia Abu Hasim Ajau'Ubi, Rosli Saad and Nordiana Mohd Muztaza
S020	The preliminary study of Meteorite Impact crater at Bukit Bunuh, Lenggong Teh Saufia Abu Hasim Ajau'Ubi, Rosli Saad, M. Mokhtar Saidin, Nordiana Mohd Muztaza and Nisa' Ali
S021	Locating And Mapping Archaeological Structure Using 2D Resistivity Method In Jeniang, Kedah, Malaysia Norhidayahti Mohd Muztaza, Mokhtar Saidin, Syeh Sahibul Karamah Masnan and Rosli Saad
S023	Research to the Methods of Economic Loss Budget on Eco-tourism Resources Jianjun Wang, Zhaoyang Li and Bei Li

2012 APCBEES JEJU ISLAND CONFERENCES

S026	Applying Seismic Refraction Method in Depicting Geological Contact at Bukit Bunuh, Lenggong, Perak, Malaysia Nisa' Ali, Rosli Saad, M. Mokhtar Saidin and Nordiana Mohd Muztaza
S028	Utilizing Radar Imaging in Identification of Water Table and Sand Stratigraphy Nur Azwin Ismail, Rosli Saad, Nordiana Mohd Muztaza and Teh Saufia Abu Hashim Ajau'Ubi
S036	Land Coverage Changes in the Hulun Buir Grassland of China Based on the Cellular Automata-Markov Model Huishi Du, Hasi Eerdun, Yi Yang and Jing An
S047	Evaluating the Ecological Risk of Nonylphenol Using Comet Assay in Constructed Wetlands Chi-Ying Hsieh and Chang-Ling Miaw
S10005	The use of Acacia tortilis leaves as low cost adsorbent to reduce the lead cations from an aquatic environment Mohamed Ackacha and Layla A. Elsharif
S10006	THE DEPTH DISTRIBUTION OF SEISMICITY AT THE NORTHERN END OF THE RWENZORI MOUNTAINS: IMPLICATIONS FOR HEAT FLOW IN THE WESTERN BRANCH OF THE EAST AFRICAN RIFT SYSTEM IN UGANDA Walusimbi Fred , Kigongo Moses, Ngonzi Vincent and Mulumba Francis
S10007	PSEUDO 3D GRAVITY MODELING TO DETERMINE INTRUSION CONTACT OF PARANG AREA, KARANGSAMBUNG, CENTRAL JAVA, INDONESIA Dwipaningtyas, Bestman W.Simamora, Dian Enggelia
S20013	Analysis of Sedimentary Environments and Mineral Resources Near The BeiBu Gulf of The South China Sea Feng Wang, Nianqiao Fang, Bingfu Jin, Pengfei Shen, Wei Zhang and WenwenWang

19:00	Dinner Banquet& the Closing Ceremony
-------	--------------------------------------

Instructions for Oral Presentations

Devices Provided by the Conference Organizer:

Laptops (with MS-Office & Adobe Reader)

Projectors & Screen

Laser Sticks

Materials Provided by the Presenters:

PowerPoint or PDF files (Files shall be copied to the Conference Computer at the beginning of each Session)

Duration of each Presentation (Tentatively):

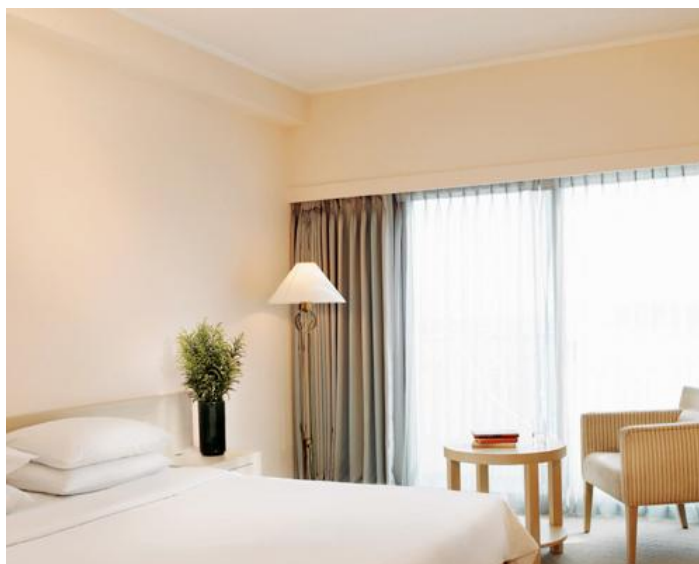
Regular Oral Session: about 8 Minutes of Presentation 2 Minutes of Q&A

Keynote Speech: 35 Minutes of Presentation 5 Minutes of Q&A

Conference Venue: Seogwipo KAL Hotel

http://english.kalhotel.co.kr/file/seogwifo_comany01_1.asp

Welcome to Seogwipo KAL Hotel, where the exotic surroundings are magically harmonized with cozy rooms, which will make your honeymoon or travel with your loved ones an unforgettable experience.



Coupled with the breath-taking scenery and romantic dreams, Seogwipo KAL Hotel boasts its 9-story building which includes the sea-side rooms with beautiful ocean view, mountain-side rooms with spectacular mountain view, traditional on-dol rooms as well as suites for business travelers.

Other facilities include four function rooms that can accommodate from family gatherings to large size business meetings, Korean, Japanese and Western cuisine restaurants and buffet.

restaurant where you can enjoy beautiful view of Pacific Ocean, fitness center, jogging track, making Seogwipo KAL Hotel an unparalleled resort hotel in the Jeju Island.



Accommodations

The accommodation for authors will not be provided by the conference organizer. The authors are requested to make their own arrangement for accommodation. For details about the hotels in Jeju Island and to book the hotels contact:

Location: 486-3 Topyeong-dong, Seogwipo-city, Jeju-do (KOREA)

Contacts: Tel : 82-64-733-2001, Toll Free : (080)201-2001

Reservations : 82-2-310-6677, Fax : 82-64-733-9377

E-Mail Address : ssm@kalhotel.net ([Reservation Form](#))